



## The cost-effective fleet management and tracking solution for taxi fleets



Cab Tracking



- The efficient system for more transparency
- Real-time overview and control over your fleet
- Data logger for historical route information
- TeleAtlas<sup>®</sup> maps for more details and higher resolution
- Click & Talk – Dispatching of trips with just one mouse click
- Fare transfer – Recording of the last fare of your HALE taximeter
- Emergency button – More safety for your drivers
- New functions and status information as shift log-on, speed control, etc.



## Cab Dispatch

Real-time vehicle tracking and dispatching

# HALE Cab Dispatch

## The features

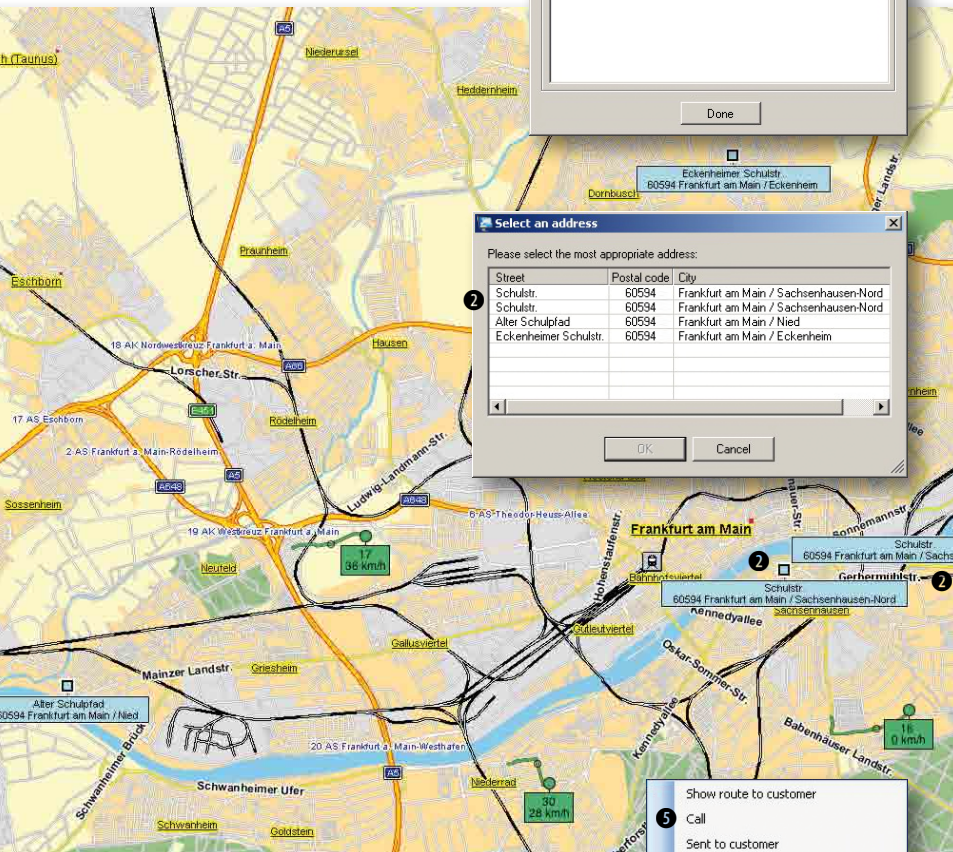
- TeleAtlas® map data reside locally on your PC - providing screen updates without data transfer
- Vector maps for more details and higher resolution
- Time or distance interval for updating of vehicle location can be set in the client for each vehicle
- Stepless and fastest zoom

## Your benefits

- Complete solution from one competent source
- Simple mounting, fast initialisation
- Trouble-free operation
- Screen update is faster than for internet solutions with browser
- No installation or activation costs



## Easy to use dispatching



## At a glance

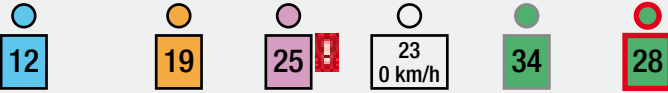


## Support for voice dispatching

- 1 Enter customer's address
- 2 Customer's address is displayed in the map window (e.g. all addresses with "Schul" are displayed)
- 3 Proposal of the nearest free taxi-cabs via distance navigation like in navigation systems
- 4 Display of distance and travel time to customer of the free vehicles - precise information for the customer
- 5 Establish voice call to the chosen taxi-cab

- Efficient overview of the fleet
- Showing current location of each taxi-cab on the map by mouse click in the vehicle window
- Easy control and quick overview of vehicle movements
- Real-time information, e.g. For Hire / Hired status, ignition, seat sensor, speed, fare and acquisition time
- Display of separate maps or map sections on one or several screens, e.g. for vehicles in two cities or overview and detail
- Vehicle status can be changed manually (e.g. when driving to customer)

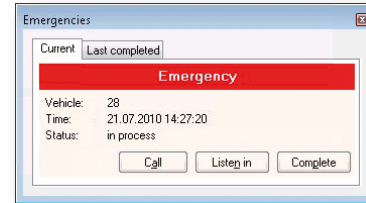
## Vehicle information



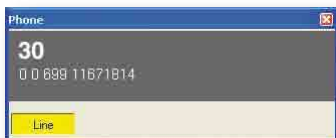
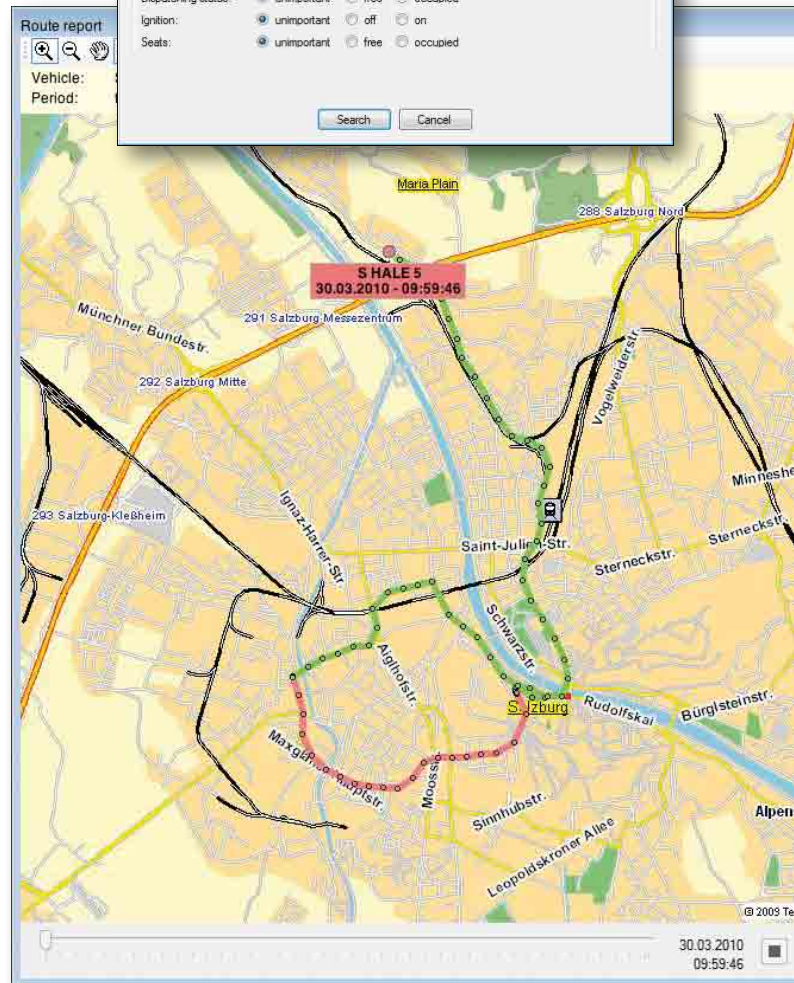
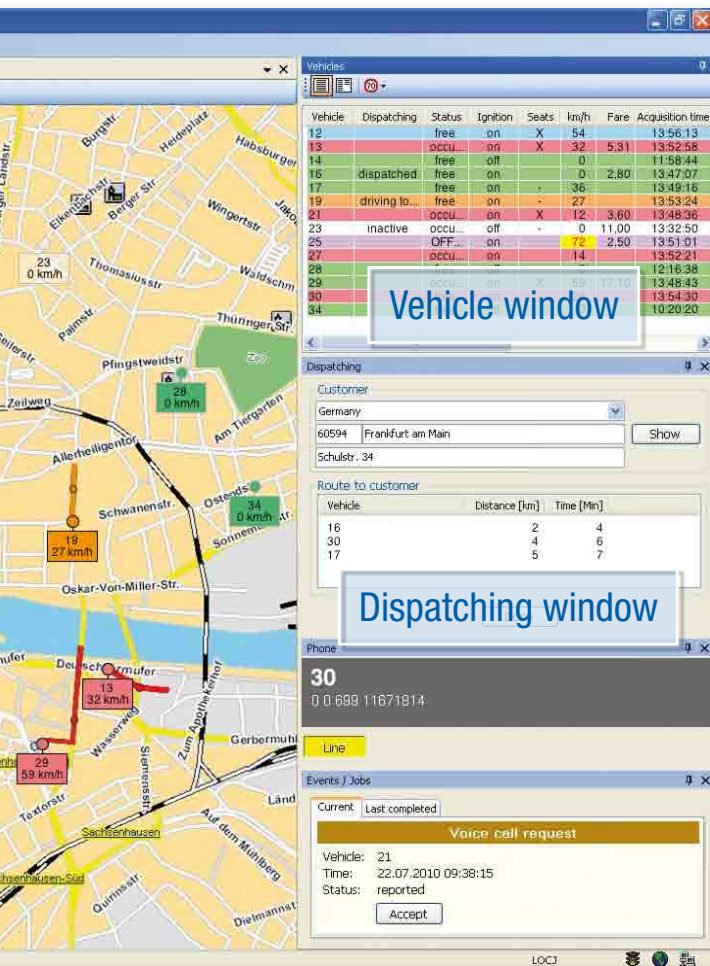
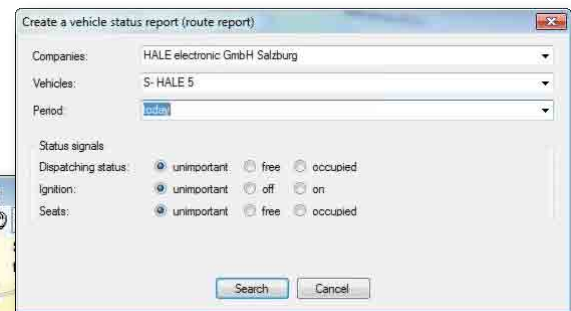
taximeter free, seat sensor occupied    driving to customer    courier trip    inactive    ignition off (frame grey)    emergency (frame red)

- Fast status recognition by means of well-defined colours
- Ideal display of the vehicles with individual names, e.g. car number or ID
- Additional information (e.g. speed)
- Easy identification of driving direction through the route line
- Status of ignition is marked by a grey / black frame
- ❗ marks an exceeding of the speed limit set.

## Emergency button for more safety



## Historical route information



## Click & Talk – Fast order dispatching

- Improve your order dispatching
- Voice call request of driver
- Phone interface

- All status information and routes of the last days and hours can be viewed for each vehicle
- Animation of the route in the map window
- Complete route can be displayed at once
- Replay of routes on the map
- The route information can be printed or exported as pdf-file

# HALE Cab Dispatch

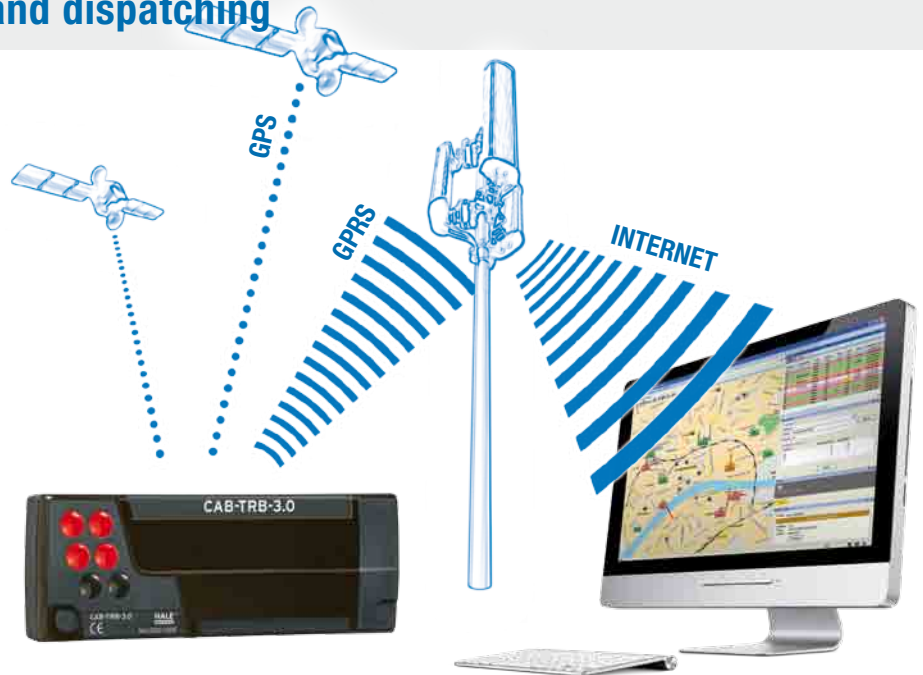
## Real-time vehicle tracking and dispatching

### Intelligent technology

- HALE Cab Tracking Box with integrated GSM modem and GPS receiver
- Smallest dimensions for simple mounting
- Plug & Play
- Software update via remote maintenance

### Perfect communication

- Data transfer via GPRS
- Real-time data updates – vehicle status is updated within 2-3 seconds
- Transfer intervals can be set by the user (100 m to 1000 m)



© werber & werner

### Cab Dispatch

Several interfaces and connection possibilities to SPT-02, SPT-01, Microtax®-06, Microtax®-05.

#### Per vehicle



For Hire/Hired status  
opt. trip record

ignition  
seat sensor

opt. audio kit (microphone and loudspeaker)

opt. voice call request (push-button)

opt. alarm (push-button)

#### Equipment for dispatching center

Client CD  
+ GeoData  
opt. audio box and headset or interface to existing telephone system (TAPI necessary)



use of HALE server

Server and Client components of the system allow multi-user features, multi map displays as well as the use of mobile clients (laptop via internet) - track your taxis, even when staying out of office. Additionally there is the possibility of a common use for several companies (e.g. night dispatching).

### Technical specifications

GPS	powerful 16 channel GPS receiver
GSM	GPRS-modem
Map data	accurate vector map data from navigation supplier TeleAtlas® cost-efficient updates possible
Client	for Windows 7, Vista, XP SP 2 or higher
Interfaces	taximeter status (For Hire/Hired) ignition (on/off) seat sensors (free/occupied) alarm (push-button) voice call request (push-button) opt. trip record from HALE taximeter
Operating voltage	8-18 Volt
Current consumption (standby)	approx. 17 mA
Current consumption (normal operation)	65-120 mA
Status LEDs	GSM and vehicle status
Connection	Sealable connections, protected against disconnection: GPS and GSM antenna, power supply

**Taximeter and dispatching solution from one competent source – the perfect extension for your HALE taximeter.**

Technische Änderungen vorbehalten



HALE - the future in TAXI

HALE electronic GmbH  
Eugen-Müller-Straße 18  
A-5020 Salzburg/Austria  
Tel: +43-662/439011-0  
Fax: +43-662/439011-9

email: [marketing@hale.at](mailto:marketing@hale.at)  
[www.hale-electronic.com](http://www.hale-electronic.com)

WN00088-0.5-09/10-WK